



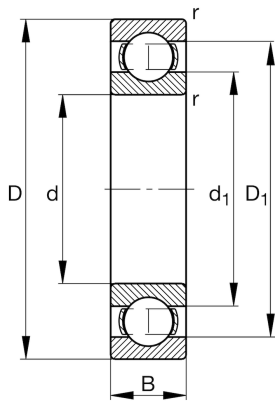
FAG

**16004-A**

Deep groove ball bearing

Schaeffler ID:  
0604530360000Deep groove ball bearing 160..-A, single  
row, steel sheet metal cage

## Technical information

**Dimensions**

$r_{\min}$	0.3 mm	Minimum chamfer dimension
$D_1$	35 mm	Shoulder diameter outer ring
$d_1$	28.4 mm	Shoulder diameter inner ring
	0.048 kg	Weight

**Main Dimensions & Performance Data**

$d$	20 mm	Bore diameter
$D$	42 mm	Outside diameter
$B$	8 mm	Width
$C_r$	7,910 N	Basic dynamic load rating, radial
$C_{0r}$	4,480 N	Basic static load rating, radial
$C_{ur}$	240 N	Fatigue load limit, radial
$n_G$	26,000 1/min	Limiting speed
$n_{gr}$	13,800 1/min	Reference speed

**Mounting dimensions**

$d_{a\min}$	22 mm	Minimum diameter shaft shoulder
$D_{a\max}$	40 mm	Maximum diameter of housing shoulder
$r_{a\max}$	0.3 mm	Maximum fillet radius

**Calculation factors**

$f_0$	16.5	Calculation factor
-------	------	--------------------

**Temperature range**

$T_{\min}$	-30 °C	Operating temperature min.
$T_{\max}$	120 °C	Operating temperature max.